

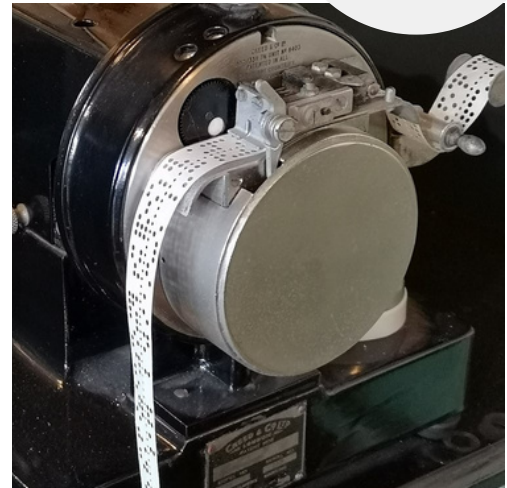
What is Morse Code?

Morse code is a code that communicates messages through different combinations of signals that are either long or short. These represent different letters, numbers, or other characters. Morse code can be communicated through sound or light.



Morse code allowed messages to be sent from afar through telegraphs, which started to become popular in the 1830's. It was depended on for long-distance communication as the 1900's came around.

Trained morse code users were responsible for sending telegraph messages at first, but as technology advanced, the creation of an automatic system made it faster and easier to send messages.



Above: punched tape transmission

Below: trained morse user operating a telegraph



Morse Code Detectives

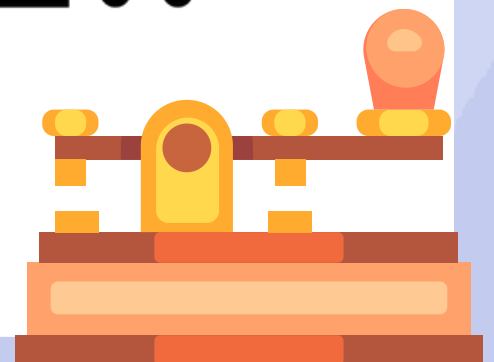
Agent Jessie and Agent Riley need your help decoding these secret morse code messages!



Long signals = "da"; short signals = "dit"

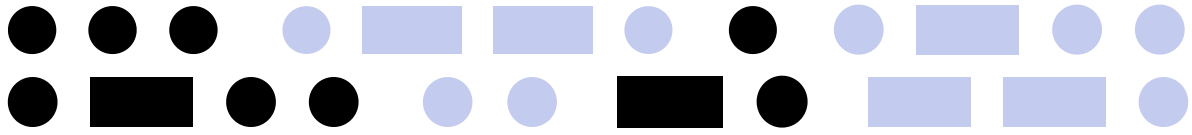
Use the key below to decode the messages!

A	● ■■	P	● ■■ ■■ ●
B	■■ ● ● ●	Q	■■ ■■ ● ■■
C	■■ ● ■■ ●	R	● ■■ ●
D	■■ ● ●	S	● ● ●
E	●	T	■■
F	● ● ■■ ●	U	● ● ■■
G	■■ ■■ ●	V	● ● ● ■■
H	● ● ● ●	W	● ■■ ■■
I	● ●	X	■■ ● ● ■■
J	● ■■ ■■ ■■	Y	■■ ● ■■ ■■
K	■■ ● ■■	Z	■■ ■■ ● ●
L	● ■■ ● ●		
M	■■ ■■		
N	■■ ●		
O	■■ ■■ ■■		

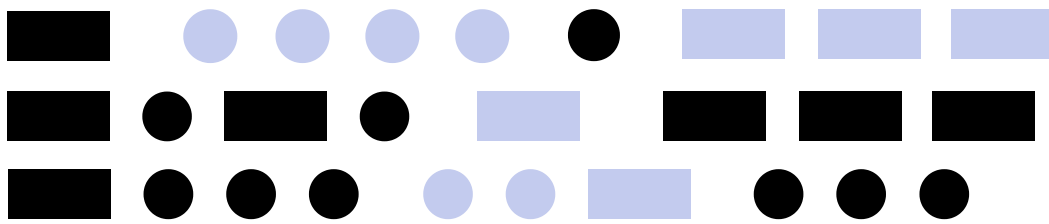




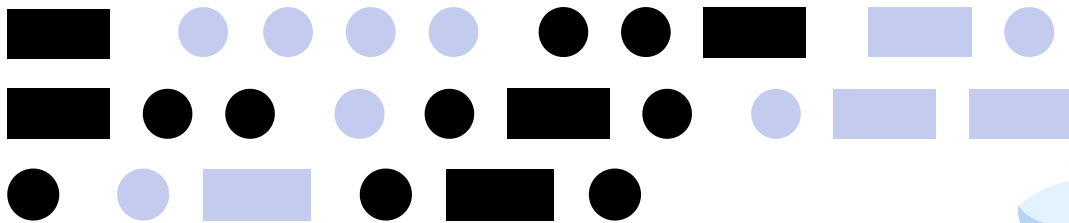
What is a witch's favorite subject?



How do fish get to school?



What do clouds wear under their raincoats?



What bird should you never let into a bank?

